

# TPS 525 Series Microminiature Tact Switch for SMT

## Features/Benefits

- 0.8 & 1.5 mm actuator height
- Ruggedized package in a compact size
- High number of cycles

## Typical Applications

- Consumer products
- Instrumentation
- Remote controls



B

Tactile Switches

## Specification

FUNCTION: Momentary action  
CONTACT ARRANGEMENT: 1 make contact = SPST, N.O.

## Electrical

MAXIMUM VOLTAGE: 15 VDC  
MAXIMUM CURRENT DC: 20 mA  
DIELECTRIC STRENGTH: 250 VA C (1mn)  
CONTACT RESISTANCE:  $\leq 100 \text{ m}\Omega$   
INSULATION RESISTANCE:  $\geq 100 \text{ M}\Omega$   
BOUNCE TIME:  $\leq 10 \text{ ms}$

## Environmental

OPERATING TEMPERATURE:  $-20^\circ\text{C}$  to  $70^\circ\text{C}$

## Process

SOLDERING: This component is suited to the following methods:  
Infrared Reflow Soldering in accordance with IEC61760-1

## Packaging

Switches in reels of:  
5,000 pieces in 0.8 mm height  
4,000 pieces in 1.5 mm height  
Dimensions of reels according to EIA 481B  
External diameter 330 mm

**NOTE:** Specifications listed above are for switches with standard options.  
For information on specific and custom switches, consult Customer Service Center.

## How To Order

Please see chart below for full part numbers.

Part Number	Height (mm)	Leads Shape	Ground Pin	Force	Travel (mm)	Operating Life
TPS525 SM08 SMTR 2 LFS	0.8	G	No	160 gf $\pm$ 50 gf	0.25 $\pm$ 0.2	1,000,000
TPS525 SK08 SMTR 2 LFS	0.8	G	No	260 gf $\pm$ 50 gf	0.25 $\pm$ 0.2	200,000
TPS525 SM15 SMTR 2 LFS	1.5	G	No	160 gf $\pm$ 50 gf	0.25 $\pm$ 0.2	1,000,000
TPS525 SK15 SMTR 2 LFS	1.5	G	No	260 gf $\pm$ 50 gf	0.25 $\pm$ 0.2	500,000
TPS525 SMG15 SMTR 2 LFS	1.5	G	Yes	160 gf $\pm$ 50 gf	0.25 $\pm$ 0.2	1,000,000
TPS525 SKG15 SMTR 2 LFS	1.5	G	Yes	260 gf $\pm$ 50 gf	0.25 $\pm$ 0.2	500,000
TPS525 SME15 SMTR 2 LFS	1.5	G	No	160 gf $\pm$ 50 gf	0.25 $\pm$ 0.2	1,000,000
TPS525 SKE15 SMTR 2 LFS	1.5	G	No	260 gf $\pm$ 50 gf	0.25 $\pm$ 0.2	500,000



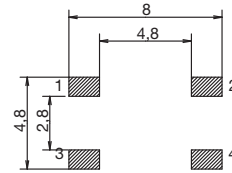
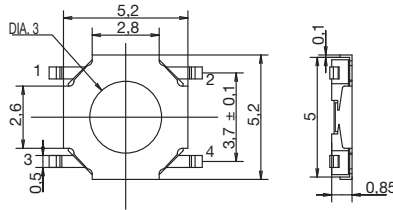
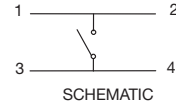
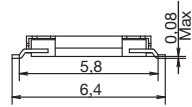
First Angle  
Projection

Dimensions are shown: mm  
Specifications and dimensions subject to change

WWW.ROCPS.COM

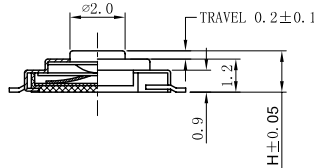
# TPS 525 Series Microminiature Tact Switch for SMT

TPS525 SM08 SMTR2 LFS  
TPS525 SK08 SMTR2 LFS

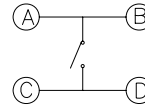


RECOMMENDED PCB LAYOUT

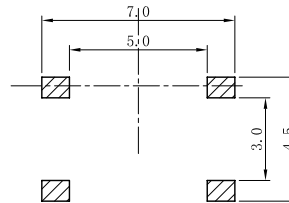
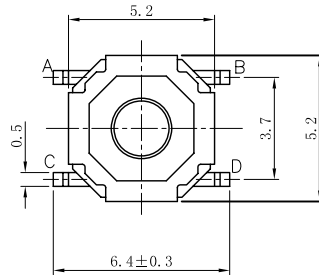
TPS525 SM15 SMTR2 LFS  
TPS525 SK15 SMTR2 LFS



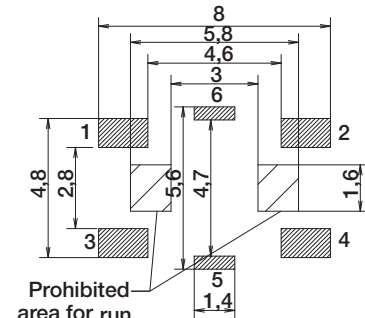
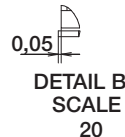
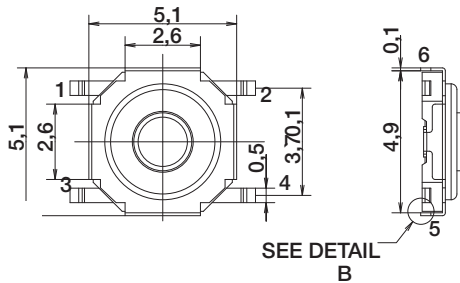
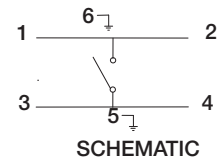
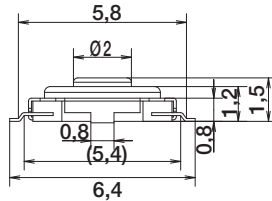
SCHMATIC



P.C.B LAYOUT  
TOP VIEW



TPS525 SMG15 SMTR2 LFS  
TPS525 SKG15 SMTR2 LFS



RECOMMENDED PCB LAYOUT



Dimensions are shown: mm  
Specifications and dimensions subject to change

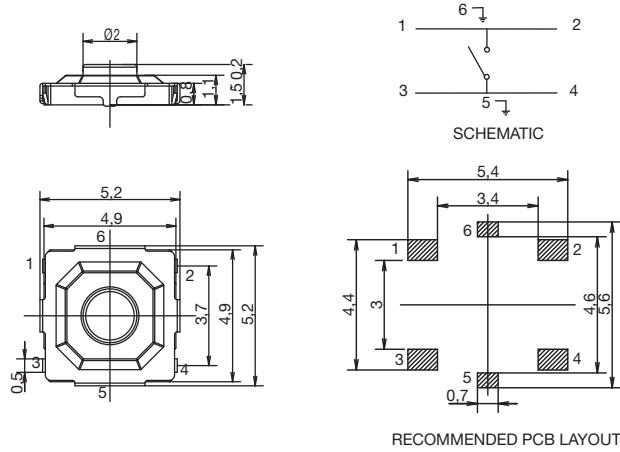
WWW.ROCPCU.COM

B

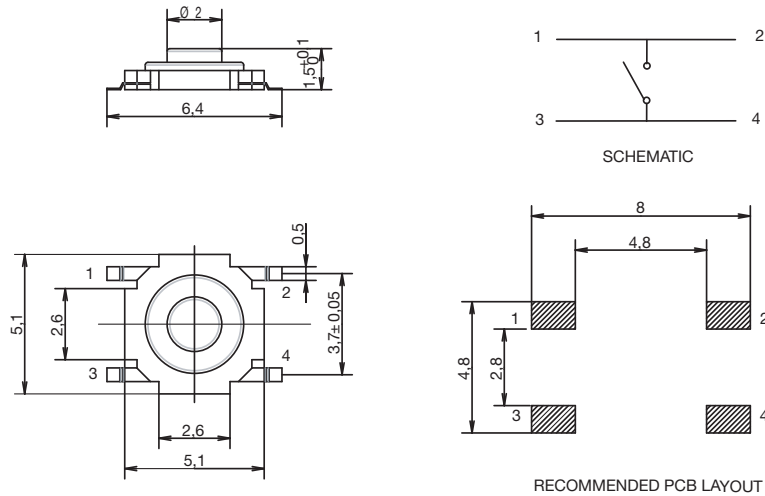
Tactile Switches

# TPS 525 Series Microminiature Tact Switch for SMT

**TPS525 SMG15J SMTR2 LFS**  
**TPS525 SKG15J SMTR2 LFS**



**TPS525 SME15 SMTR2 LFS**  
**TPS525 SKE15 SMTR2 LFS**



*Dimensions are shown: mm  
Specifications and dimensions subject to change*

WWW.ROCPU.COM



**B**

**Tactile Switches**



# TPS 525 Series Microminiature Tact Switch for SMT

## TAPE & REEL

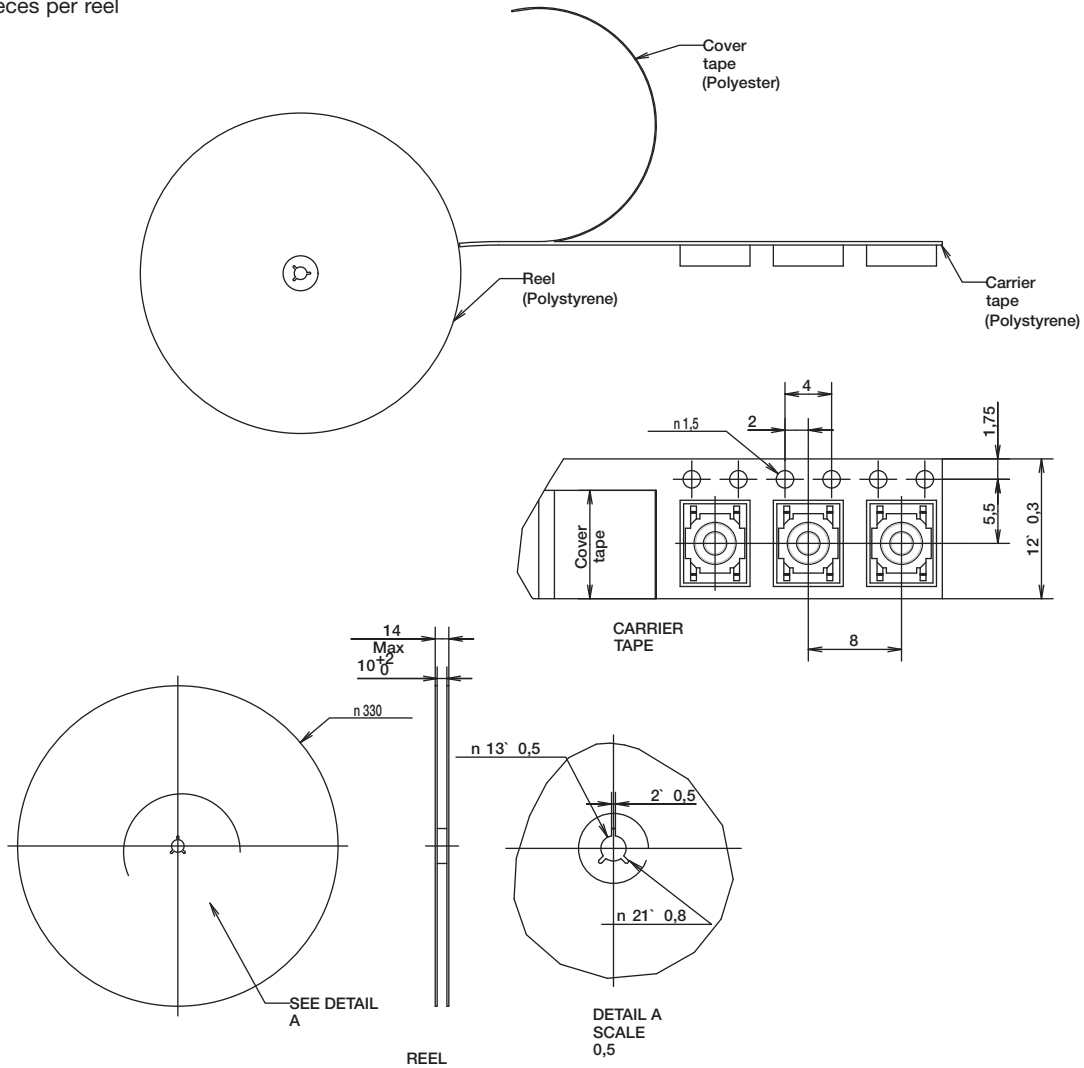
**1.5 mm height**

4,000 pieces per reel



**B**

**Tactile Switches**



Dimensions are shown: mm  
Specifications and dimensions subject to change

WWW.ROCPCU.COM